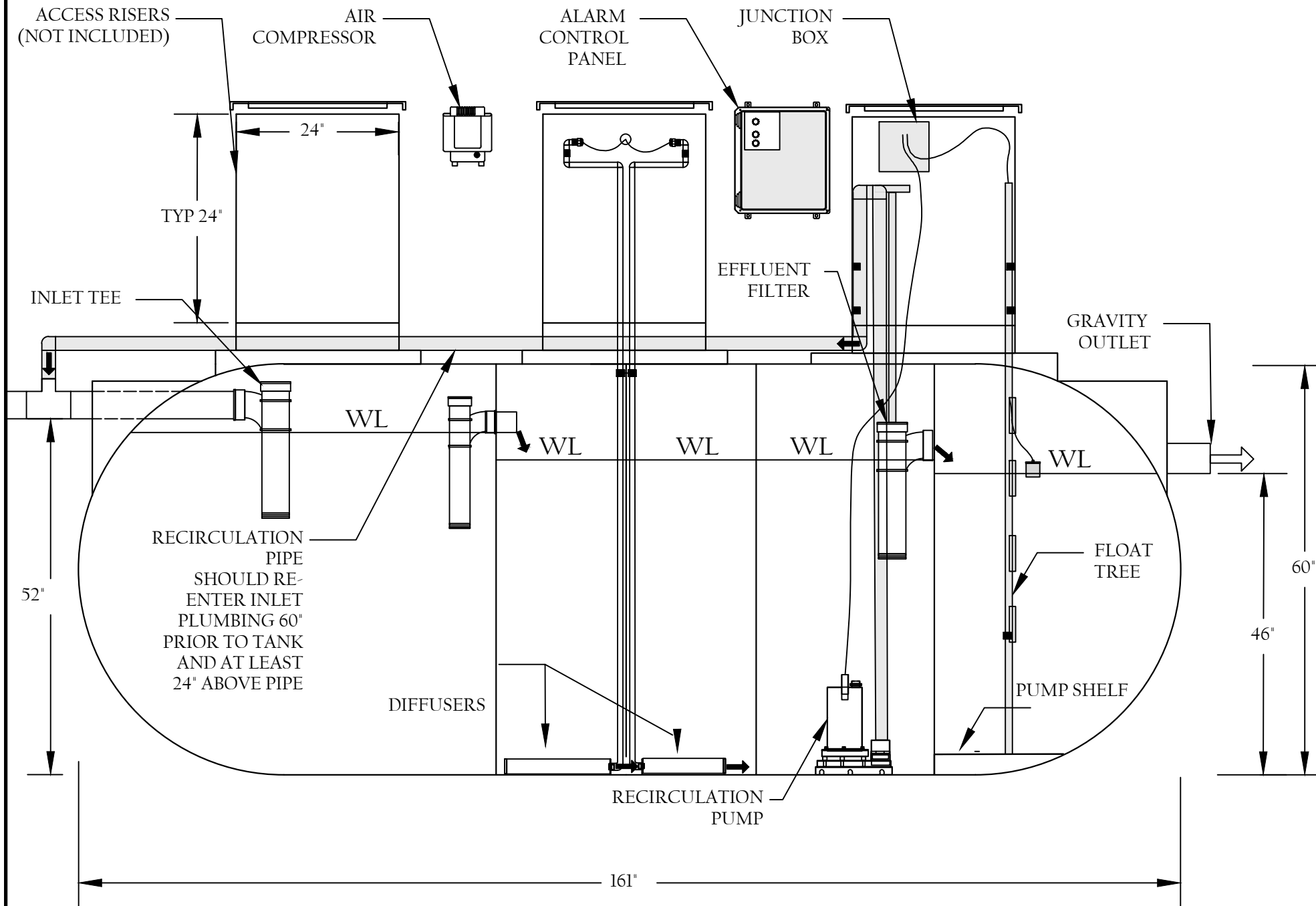



# ENVIROSERVER CS325-800



CS325-800		
	Influent	Effluent
GPD (Gallons Per Day)	325	
BOD (mg/L)	601-800	30
TSS (mg/L)	501-700	30
TN (mg/L)	75	50% Reduction
FOG (mg/L)	25* May Require Grease Trap	<5
Total Organic Load (#)	2.5#	
Alkalinity	7 mg/L TN: 1 mg/L CaCO3 Ratio Min 150	
PH	7.0-7.5	
Ammonia NH3	75	

Product Supplied by MicroSepTec	
Tank	1500 Gallon 5 Compartment Tank
Recirculation Pump	Mechanical Recirculation
Alarm Control Panel	Standard Gravity (options available)
Power Requirement	120V 15AMP Single Circuit
Aeration	Two(2) Linear Compressors
Bio-Media	2"
Diffusers	High Capacity Diffusers
Lids	Non Traffic Rated

Options	
Control Panel	Simplex/Duplex Discharge
Power Requirements	One (1) 15A and one (1) 20 A breaker
Disinfection	UV or Chlorination
Telemetry	Proprietary
Products/Options supplied by others	
Discharge pumps	Sized according to design
Flow Meter	Required for 50% or Greater Reduction in TN
Riser Adapters and Risers	Locally Obtained

<b>MODEL:</b> CS325-800 ENVIROSERVER ADVANCED WASTEWATER TREATMENT SYSTEM		<b>PROJECT:</b> PRODUCT DRAWING		 1(877)4SEPTIC [1-877-473-7842] www.microseptec.com	
<b>SCALE:</b> NONE	<b>DRAWN BY:</b> MJS	<b>ORG. DWG DATE:</b> 12/30/2019	<b>REV. DWG DATE:</b> 01/10/2024	<b>SHEET SIZE:</b> 11' x 17'	<b>SHEET NUMBER:</b> CS325-800.1